



MIGRATION POLICY GROUP

Migrant Integration Policy Index International launch

**Thomas Huddleston,
Research Director
Migration Policy Group**

International launch webinar | 9 December 2020

Webinar agenda

#MIPLEX2020 @_MIPLEX

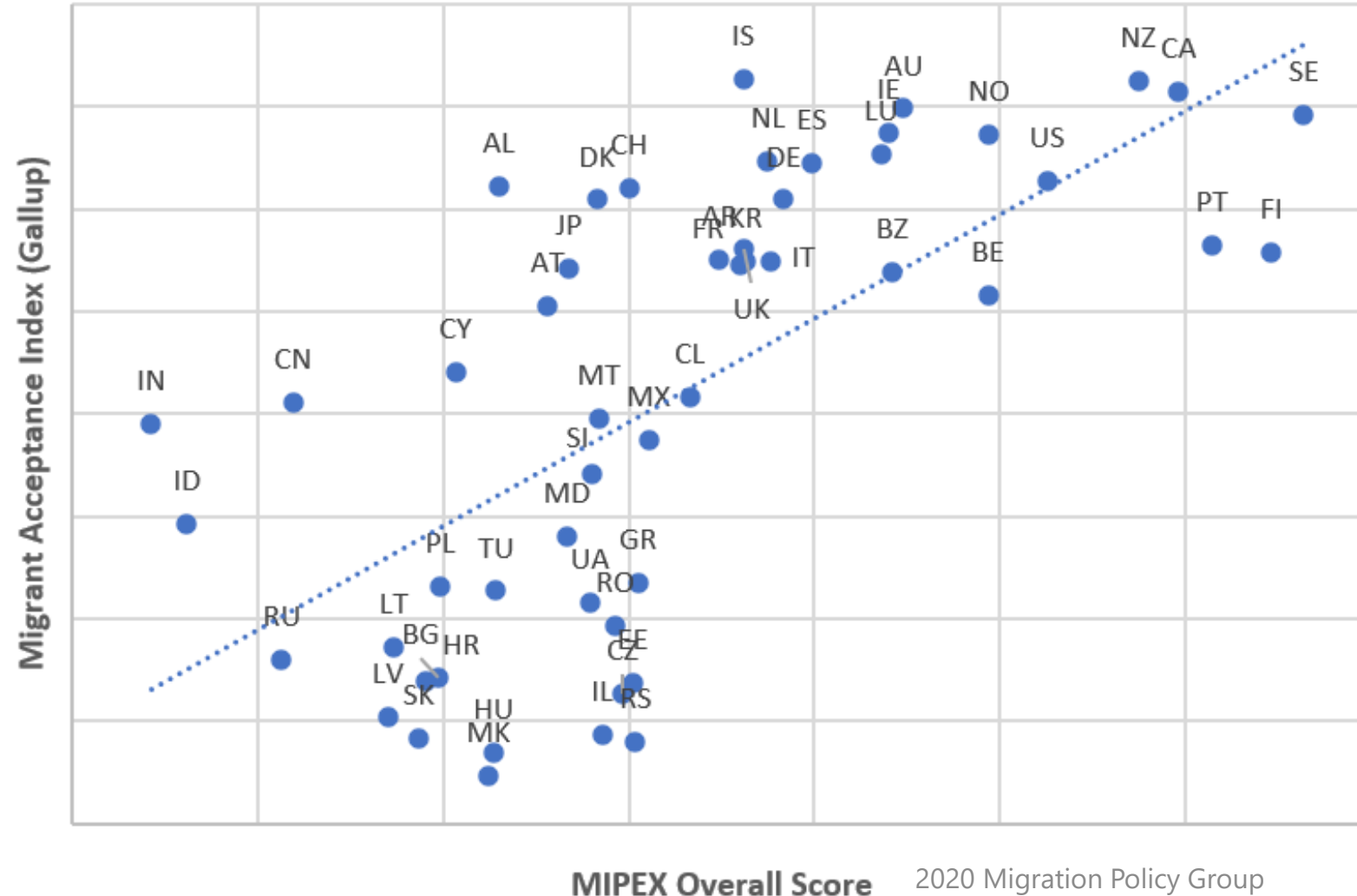
	Topic	Speaker
2PM-2.15PM	Welcome	Dr. Thomas Huddleston, Research Director, MPG
2.15PM-2.30PM	MIPLEX 2020 Key Findings	Dr. Giacomo Solano, Policy and Statistical Analyst, MPG
2.30PM-2.50PM	Our international areas of weakness: education and political participation	Mialy Dermish, Head of Secretariat, SIRIUS Network Melis Ari, Member, Transatlantic Migrant Democracy Dialogue
2.50PM-3.10PM	Links between MIPLEX and the new EU Integration Action Plan	Antoine Savary, Deputy head of unit, DG HOME, European Commission
3.10PM-3.30PM	Q&A	Carmen Clemente, Head of Communications, MPG

What is MIPEX? www.mipex.eu

- Most comprehensive tool to compare integration policies:
 - Number of indicators
 - Methodology with national experts & checks
 - Longitudinal scope (2007-2019)
 - Thematic scope (including health)
 - Geographic scope (52 countries)
- Most cited international benchmark by policymakers, NGOs, media & research
 - Example: Draft Global Compact on Migration
- Links between policies & outcomes: 130 peer reviewed scientific studies identifying 400+ links between MIPEX to integration outcomes for immigrants & the public

Integration policies as a key for public welcome

Studies link policies & public opinion

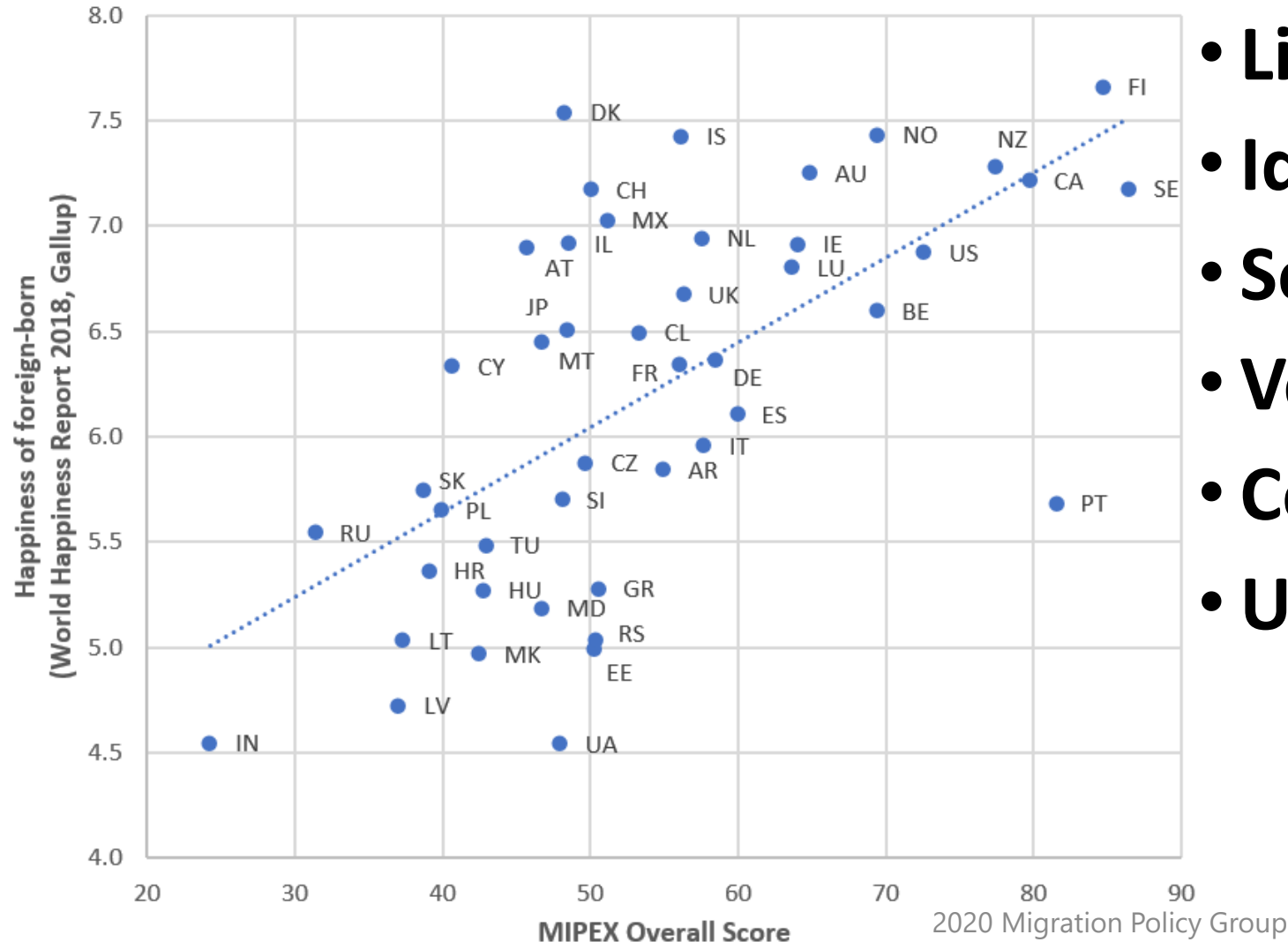


Virtuous vs. Vicious Cycle

- *Anti-immigrant threat*
- *Xenophobia*
- *Islamophobia*
- *Social trust*
- *Interaction*

Integration policies as a key to immigrants' happiness

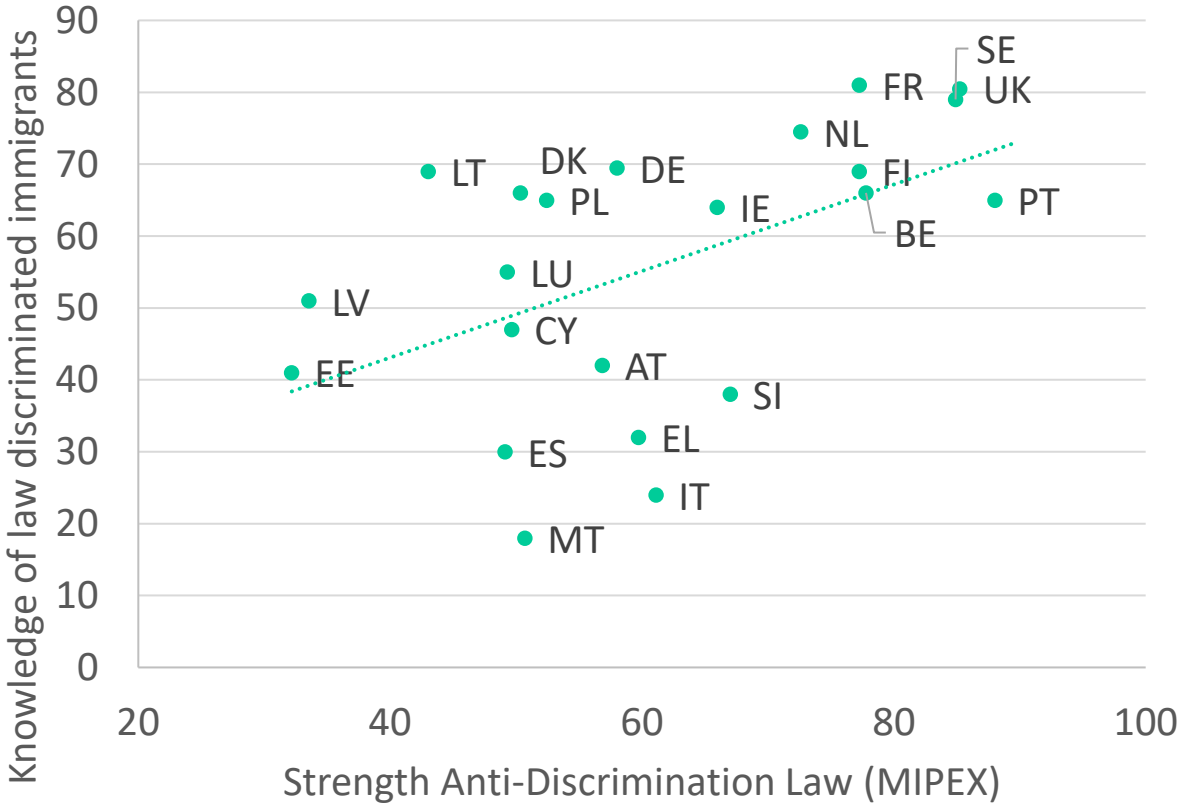
Studies link policies & immigrant attitudes/outcomes



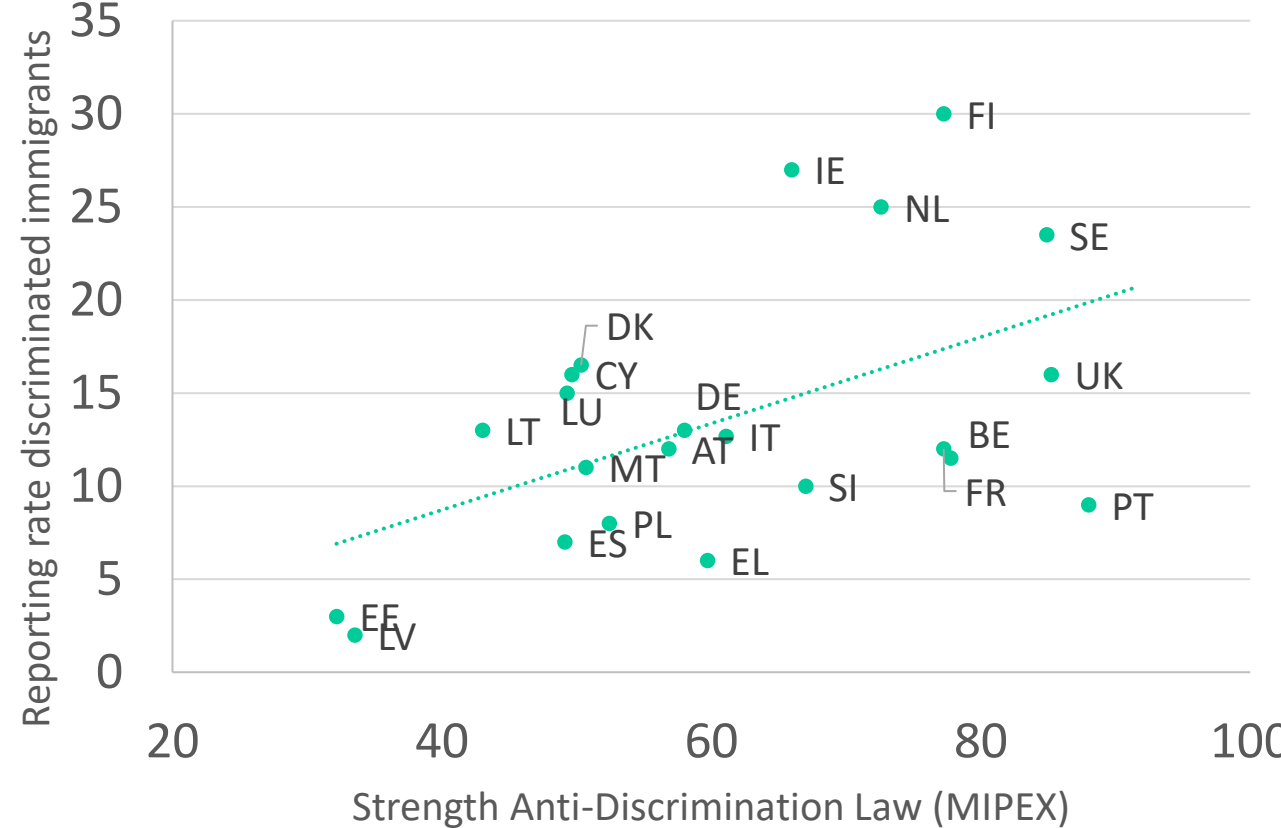
- Life satisfaction
- Identity, belonging & pride
- Social trust
- Voting
- Conventional participation
- Unconventional participation

Strong anti-discrimination policies slowly improve awareness, reporting & trust (work of Conrad Ziller)

Correlation MIPEX EU-MIDIS II: Knowledge of law 2016



Correlation MIPEX EU-MIDIS II: Reporting rates 2016



Dozens of studies link policies to health (*Jaurez, Malmusi, Ikram, Giannoni*) & education (*Cha & Ham*)

THE LANCET
Global Health

ARTICLES | VOLUME 7, ISSUE 4, E420-E435, APRIL 01, 2019

Effects of non-health-targeted policies on migrant health: a systematic review and meta-analysis

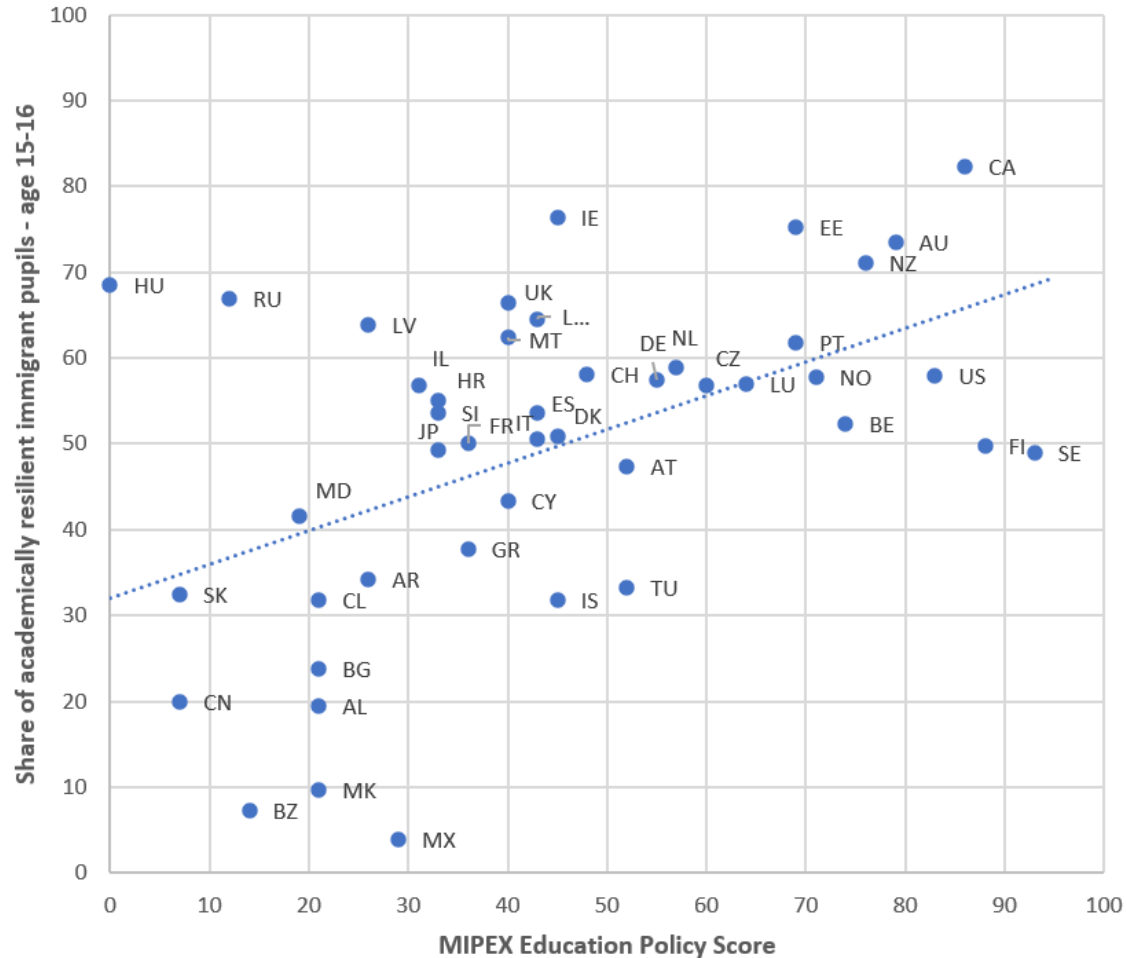
Sol Pía Juárez, PhD • Helena Honkaniemi, MSc • Andrea C Dunlavy, PhD • Robert W Aldridge, PhD • Prof Mauricio L Barreto, MD • Srinivasa Vittal Katikireddi, PhD † • et al. [Show all authors](#) • [Show footnotes](#)

Open Access • Published: March 06, 2019 • DOI: [https://doi.org/10.1016/S2214-109X\(18\)30560-6](https://doi.org/10.1016/S2214-109X(18)30560-6)

[Check for updates](#)

- *Self-reported health*
- *Chronic illnesses*
- *Diabetes,*
- *Old-age frailty*
- *Mortality*

MIPEX Education & immigrant academic resilience (PISA 2015)





MIGRATION POLICY GROUP



**MIGRANT
INTEGRATION
POLICY INDEX**
2020

Key Findings

**Giacomo Solano,
Policy and Statistical Analyst
Migration Policy Group**

MIPEX International Launch – 9 December 2020

MIPEX 2020

www.mipex.eu

- What are the main dimensions of integration policy?
- What are the different approaches to migrant integration?
- Which countries are the leaders on integration policy?
- Which countries have improved or undermined their policies?
- What are the international strengths and weaknesses?

What are the main dimensions of integration policy?

MIPEX 2020 captures country's approach to integration on 3 dimensions:

- 1. Basic rights:** *Can immigrants enjoy comparable rights as nationals?*
e.g., equal rights to work, training, access to health, and non-discrimination
- 2. Equal opportunities:** *Can immigrants receive support to enjoy comparable opportunities as nationals?*
e.g., targeted support in education, support for health, and political participation
- 3. Secure future:** *Can immigrants settle long-term and feel secure about their future in the country?*
e.g., family reunification, permanent residence and access to nationality

What are the different approaches to migrant integration?

- 5 approaches to integration based on the 3 dimensions:
 - **Top Ten countries** (EQUAL Rights + Opportunities + Security)
 - **Comprehensive integration** (MOST Rights + Opportunities + Security)
 - **Temporary integration** (Rights + Opportunities – Security)
 - **Equality on paper** (Rights + Security – Opportunities)
 - **Immigration without Integration** (Security – Rights – Opportunities)

Which countries are the leaders on integration policy? Top 10

<https://www.youtube.com/watch?v=wa65XXc0yCw&feature=youtu.be>

Which countries are the leaders on integration policy? Ranking

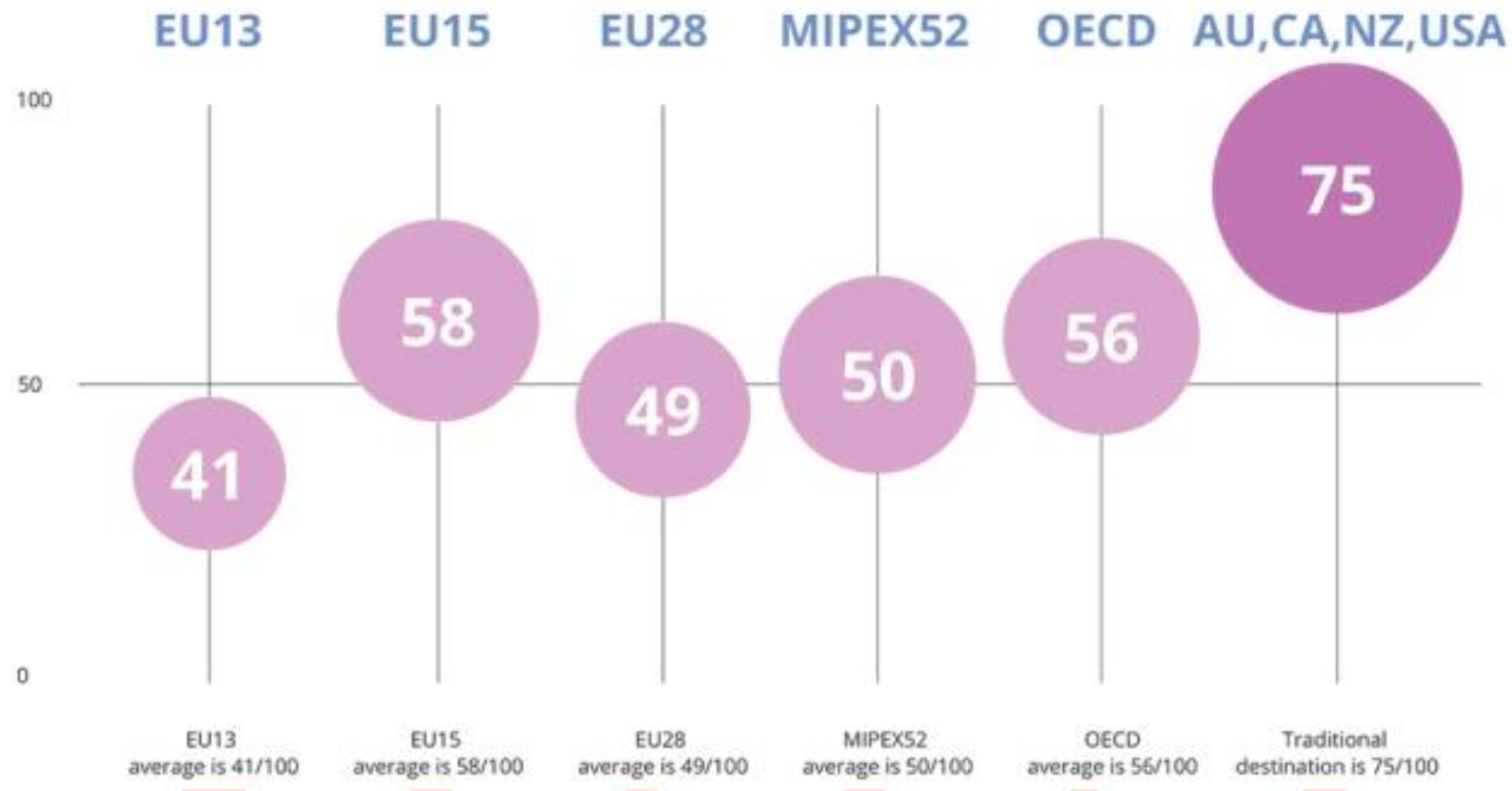
Range of policies still differ within the 5 approaches



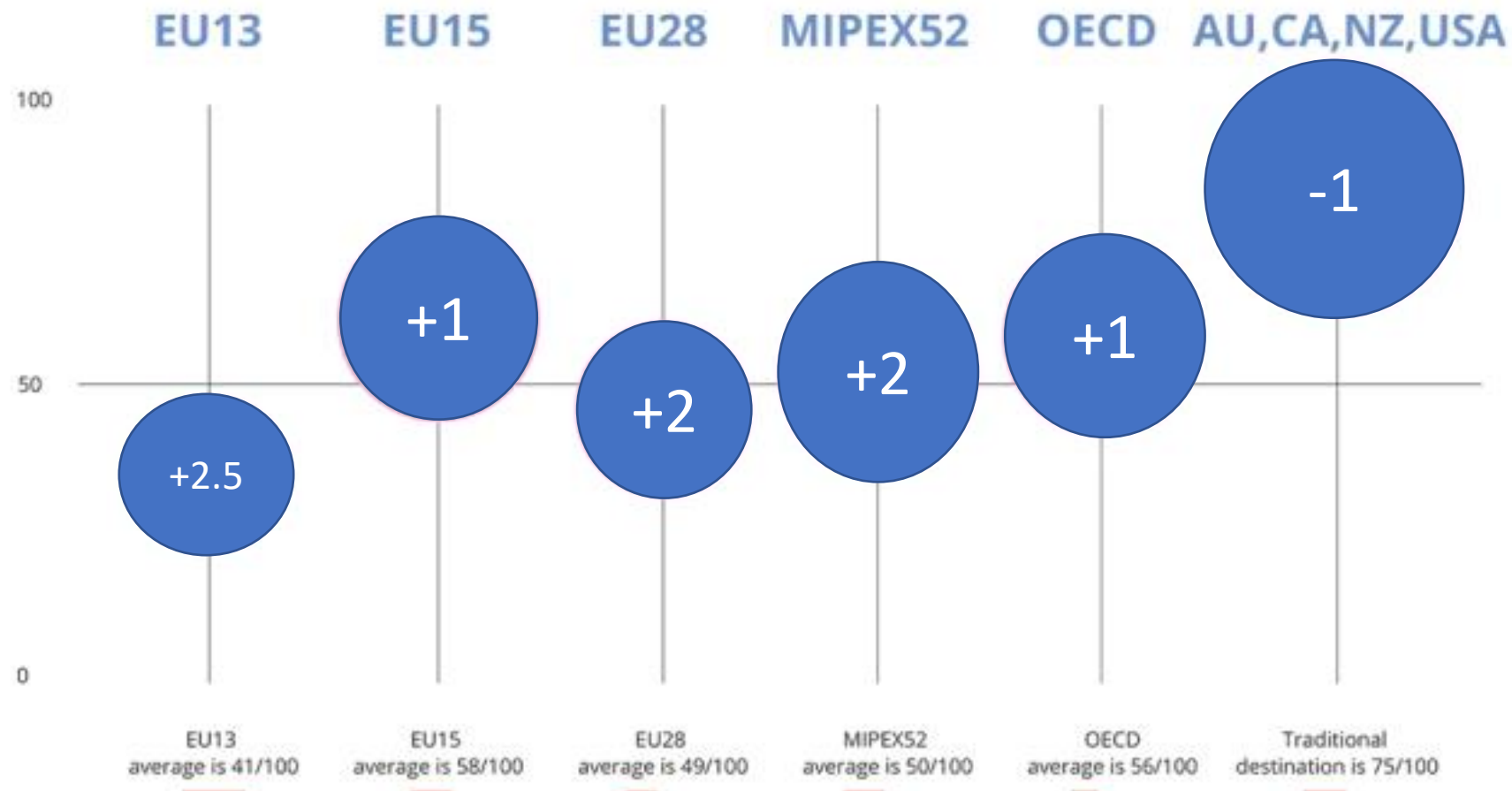
10 groups, ranked by average group MIPEX score

<https://www.mipex.eu/key-findings>

Which countries are the leaders on integration policy?



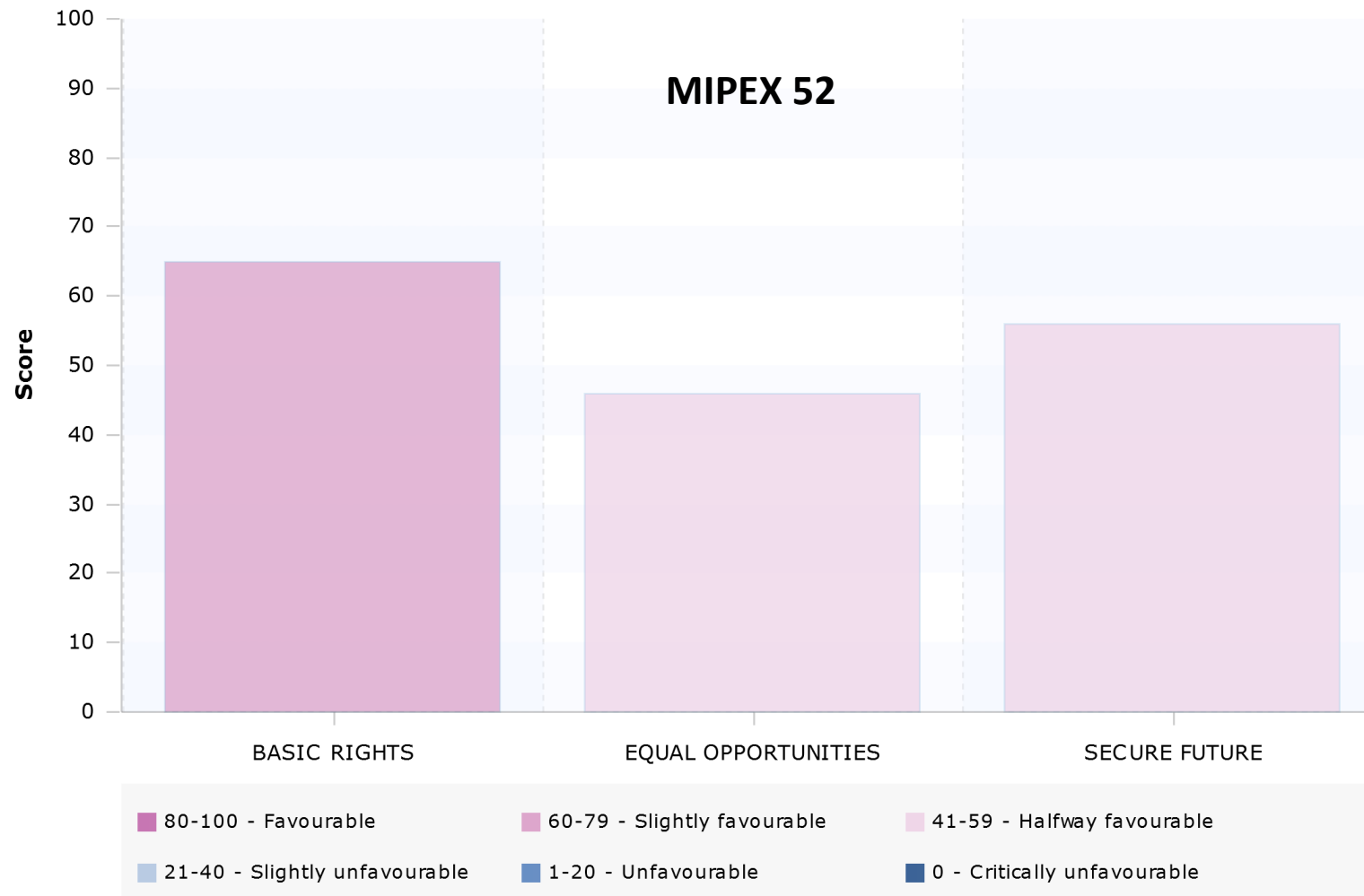
Which countries have improved or undermined their policies?



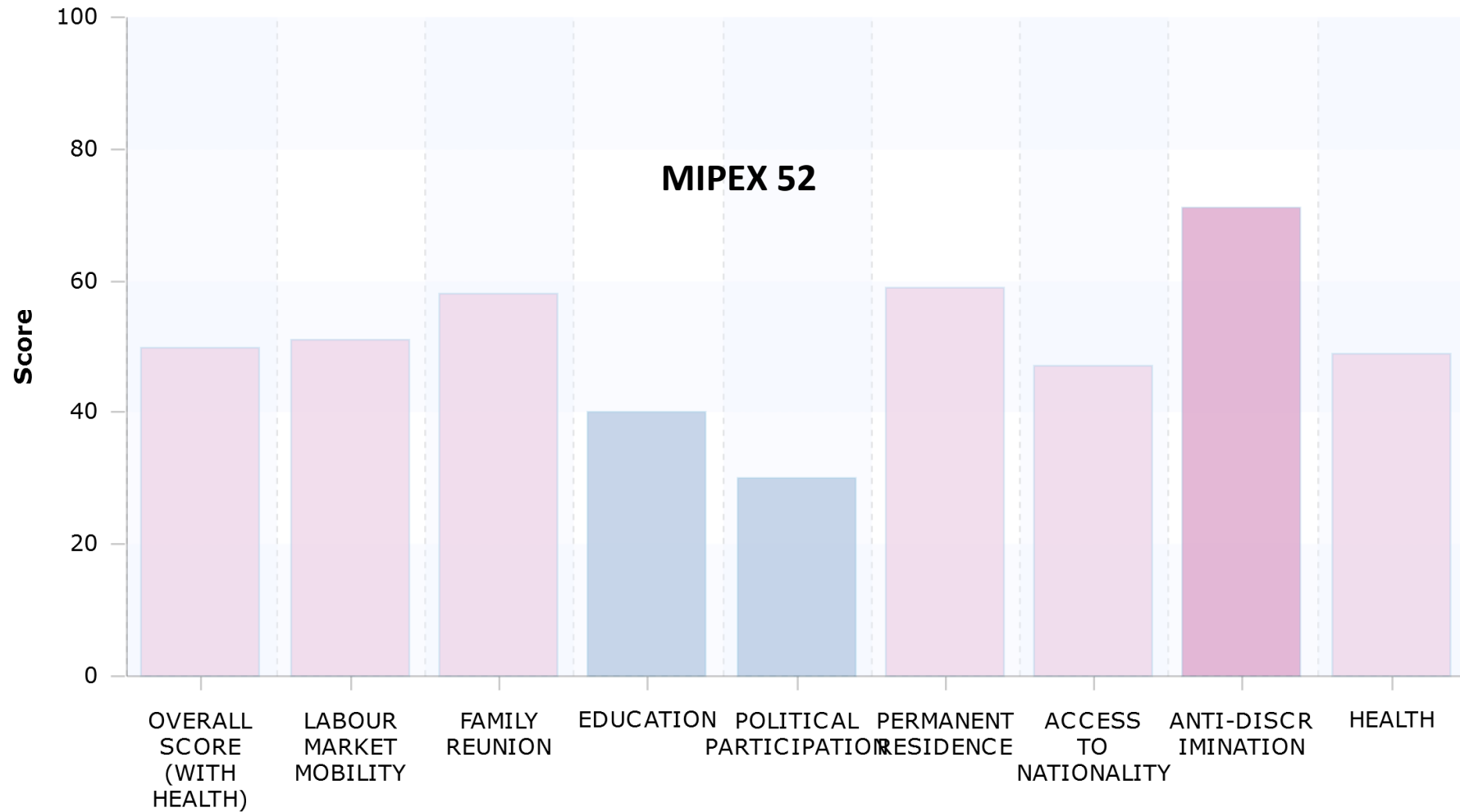
Which countries have improved or undermined their policies?



What are the international strengths and weaknesses?



What are the international strengths and weaknesses?



80-100 - Favourable

60-79 - Slightly favourable

41-59 - Halfway favourable

21-40 - Slightly unfavourable

1-20 - Unfavourable

0 - Critically unfavourable

Conclusions

- Countries differ significantly in their approach to integration
- Different approaches to integration have different strengths and weaknesses
- Integration policies are very slowly improving over time
- Major international weakness is equal opportunities, especially in education & political participation
- Integration policies matter for integration as a two-way process for immigrants & the public

Thank you!

<https://www.mipex.eu/who-produces-mipex>

MIPEX Coordination Team



PRINCIPAL INVESTIGATORS

Giacomo Solano

Statistical and policy researcher, MPG

Thomas Huddleston

Research Director, MPG



OTHER RESEARCHERS

David Ingleby

Affiliated Researcher, University of Amsterdam

Francesco Pasetti

Research Fellow CIDOB



ASSISTANTS

Sara Bortoletti

Intern, MPG

Marco Paron Trivellato

Intern, MPG

Khaddija Jobe

Intern, MPG

Anna Busquets

Content Manager, CIDOB

Carlota Cumella de Montserrat

Research Assistant, CIDOB

LEADING PARTNERS



SPONSORS



...and all the 150+ national partners and researchers!

